

046272

RECEIVED
LARAMIE COUNTY
CHEYENNE, WY.

'88 JUL 6 PM 3 18

CERTIFIED LAND CORNER RECORDATION

DESCRIPTION OF CORNER EVIDENCE FOUND, AND ORIGINAL RECORD (if known)

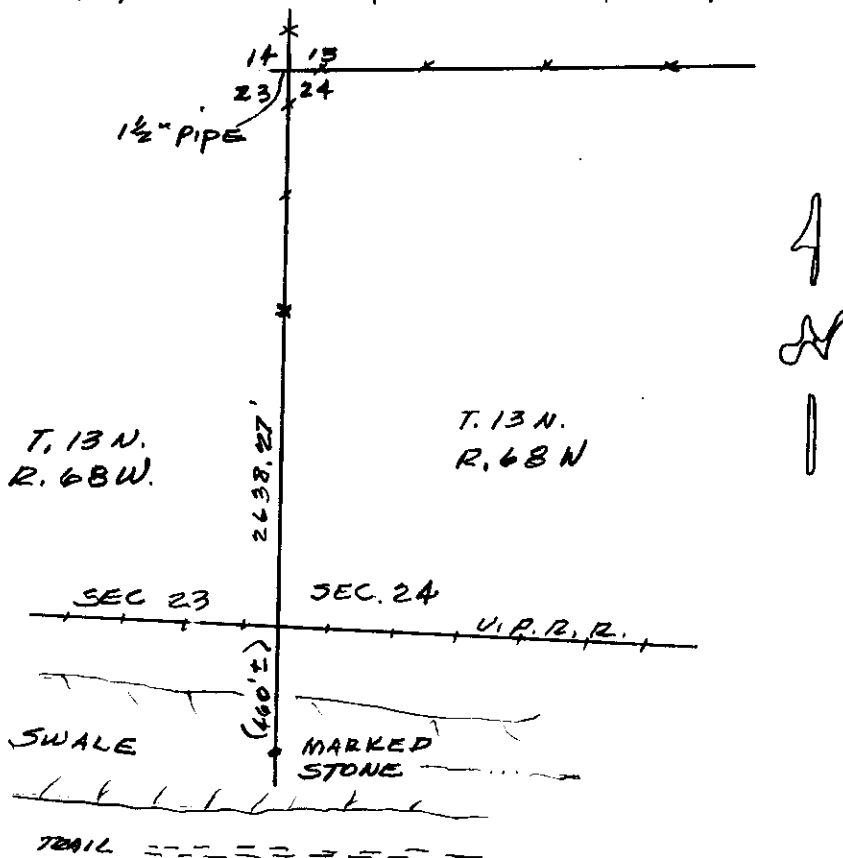
MARKED STONE WITH 1 1/2" PIPE DRIVEN
IN GROUND ON NORTH SIDE

1/4 CORNER WEST SIDE OF SECTION 24
T. 13 N. , R. 68 W. 6TH P.M.

DESCRIPTION OF MONUMENT AND ACCESSORIES ESTABLISHED
TO PERPETUATE THE ORIGINAL LOCATION OF THIS CORNER:

DISTANCE TO NORTHWEST SECTION CORNER
IS 2638.27 FEET
BEARING N 0° 00' 53" W DETERMINED FROM
NORTH LINE OF SECTION 24 (N 89° 47' E)

SKETCH, WITH COURSE AND DISTANCE TO ADJACENT CORNER IF DETERMINED IN THIS SURVEY.
(May Sketch or Paste Reproduction on Reverse Side.)



I, DONALD M. HOPKINS certify that I have carefully performed or reviewed the work done on the diagrammed corner as reported on this recordation form and approve the same.

Donald M. Hopkins
Signature of Surveyor

558
Registration No.

STATE OF WYOMING,
Office of Clerk and Recorder,
County of Laramie

This "corner record" was filed for record on the 6 day of July, 1988, was noted on the cross-index plat and is assigned page No. _____, in book No. _____.

Janet C. Whitehead
County Official
Cross Index No. P-21 T. 13N R. 68W Mer. _____
_____ T. _____ R. _____ Mer. _____
_____ T. _____ R. _____ Mer. _____
_____ T. _____ R. _____ Mer. _____
_____ T. _____ R. _____ Mer. _____
_____ T. _____ R. _____ Mer. _____